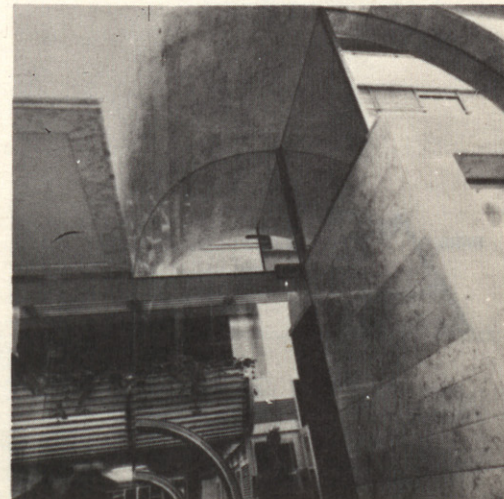
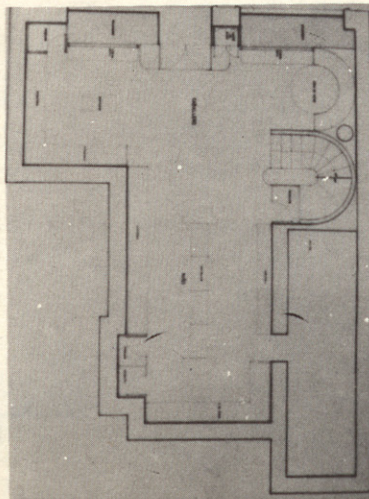
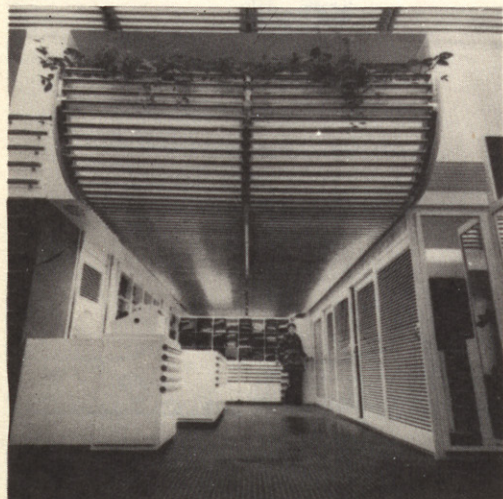
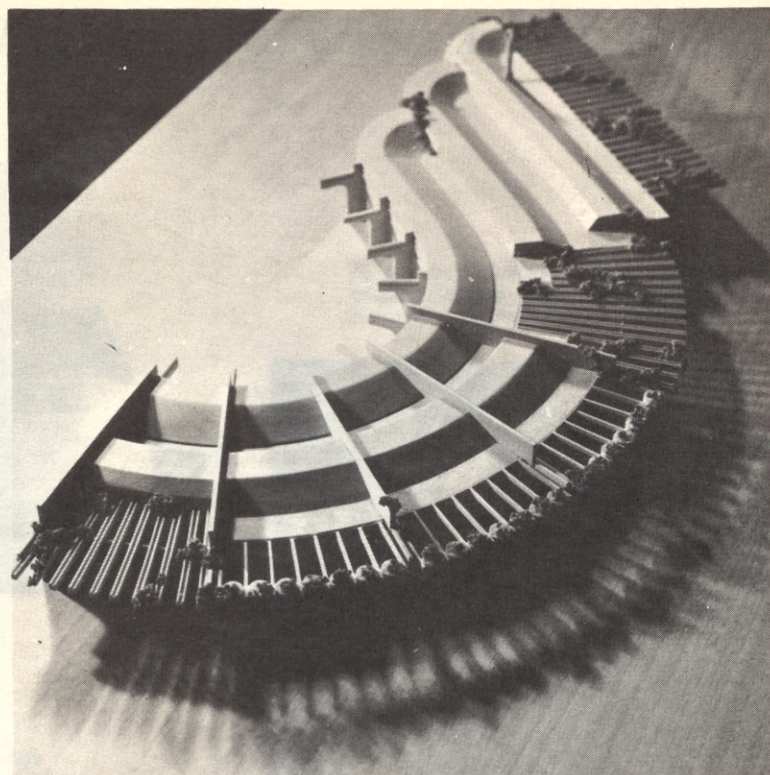
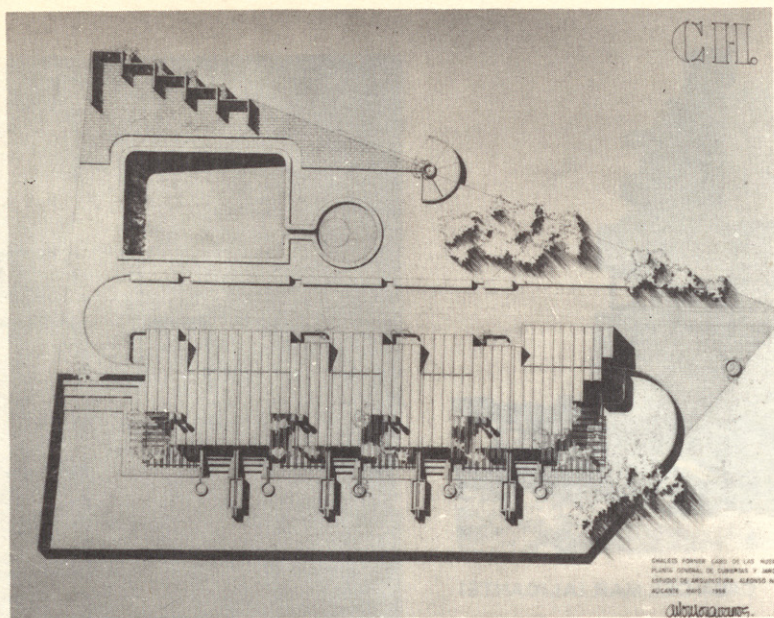




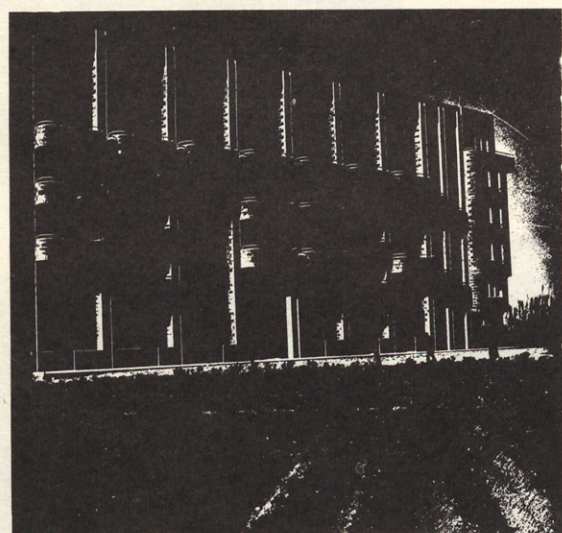
El pragmatismo de ciertos arquitectos de provincias suele ser un trasunto orgánico no especulativo, más o menos encadenado a las presiones locales.

TIENDAS EN ALICANTE

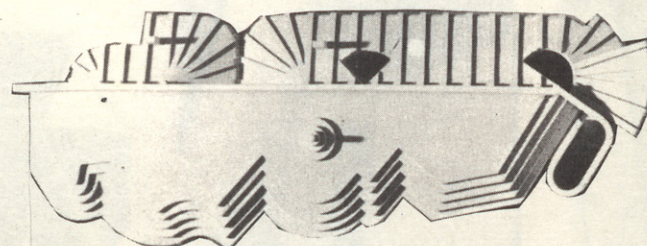




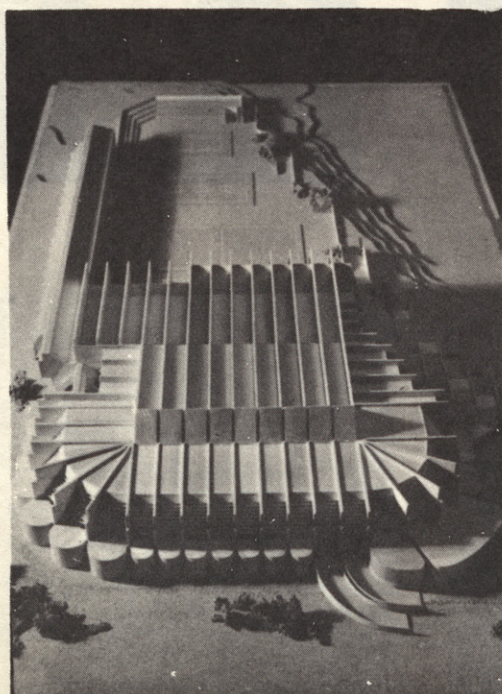
VIVIENDAS CABO HUERTAS



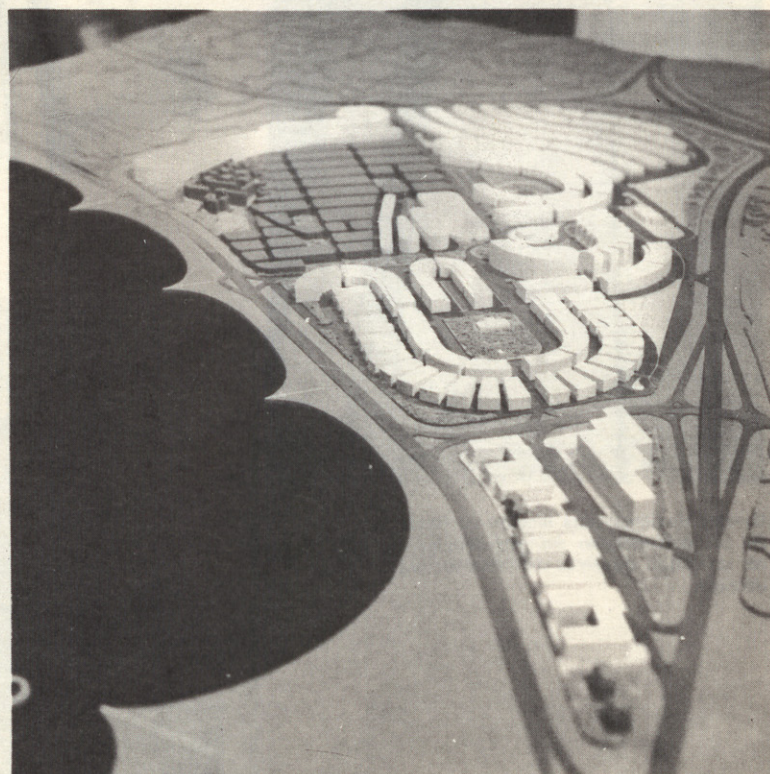
COOPERATIVA
AGRICOLA
EN ALMORADI
(ALICANTE)



BLOQUE DE VIVIENDAS. PLANTA CUBIERTA



PALACIO DE LOS DEPORTES



PLAN PARCIAL DE SAN GABRIEL