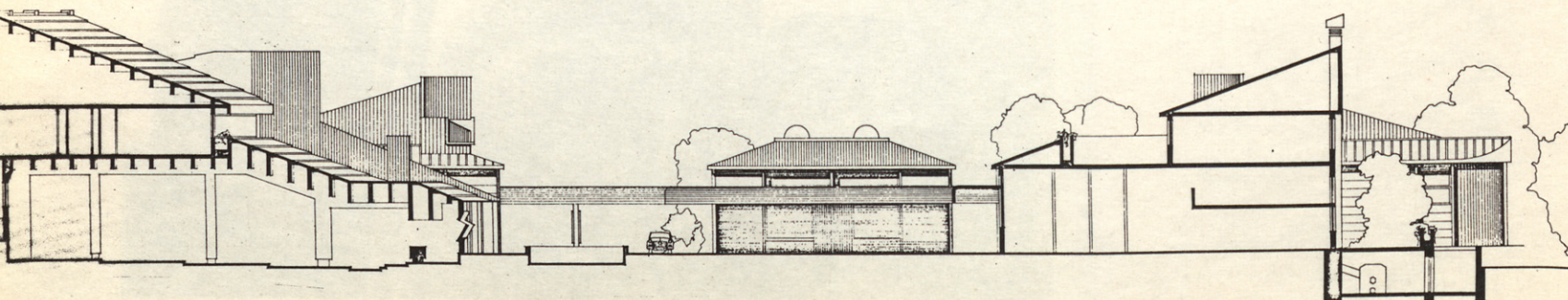
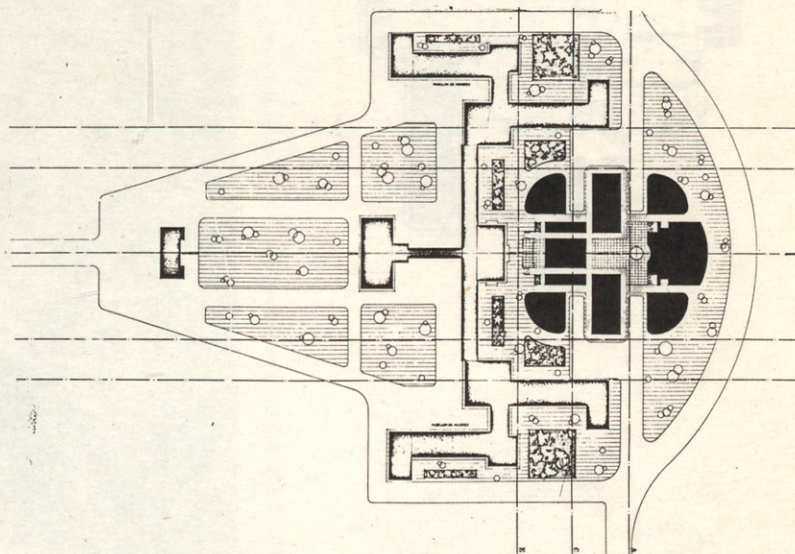
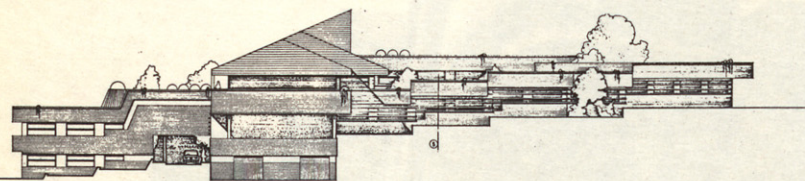
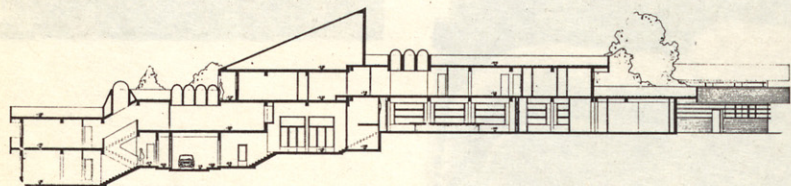
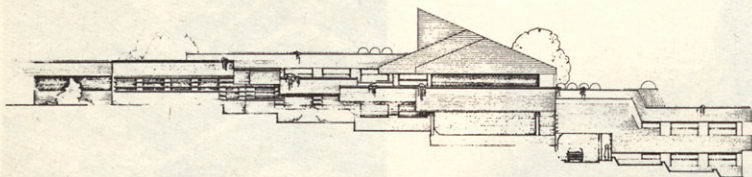
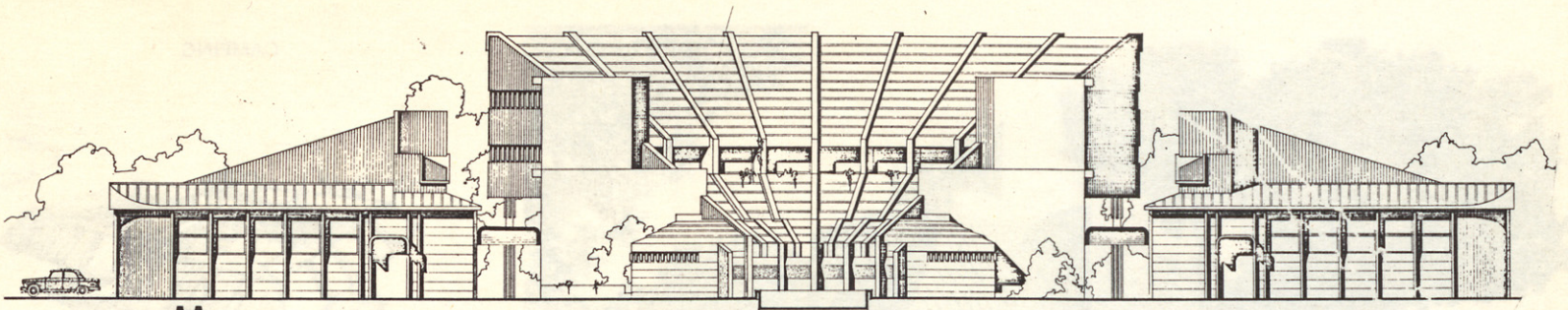


LA ARQUITECTURA GALLEGA, OSCILANTE ENTRE LA TRADICION Y LAS MUTACIONES ORGANICO-RACIONALISTAS ES PROPICIA A MANIFESTACIONES ECLECTICISTAS COMO SALVAGUARDA DE VALORES LOCALES Y POPULARISTAS EN UN PRAC MATISMO QUE EN OTROS ARQUITECTOS JOVENES, OFRECE ESVIACIONES DUDOSAS.

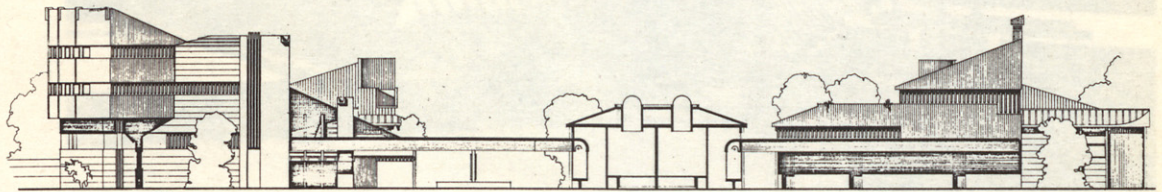
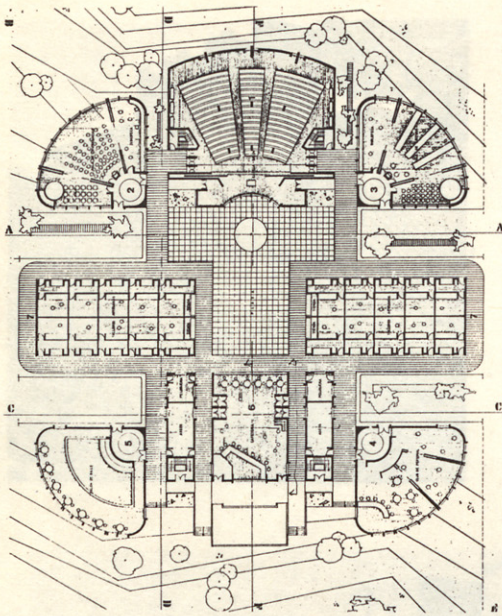
## MANIERISMO ALTIANO



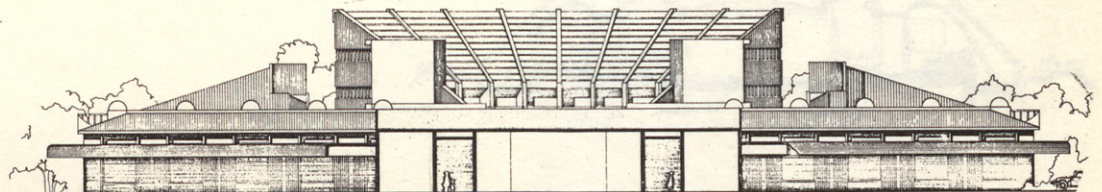




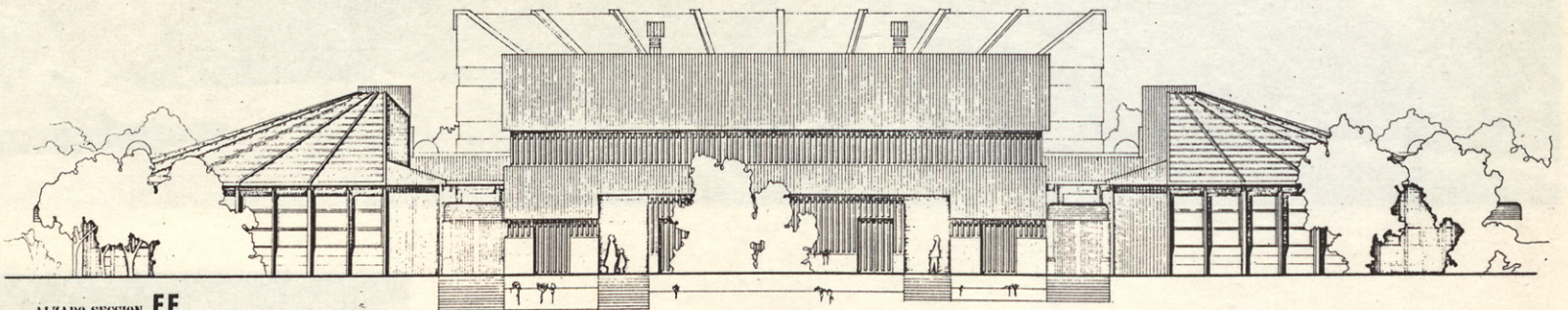
ALZADO SECCION AA



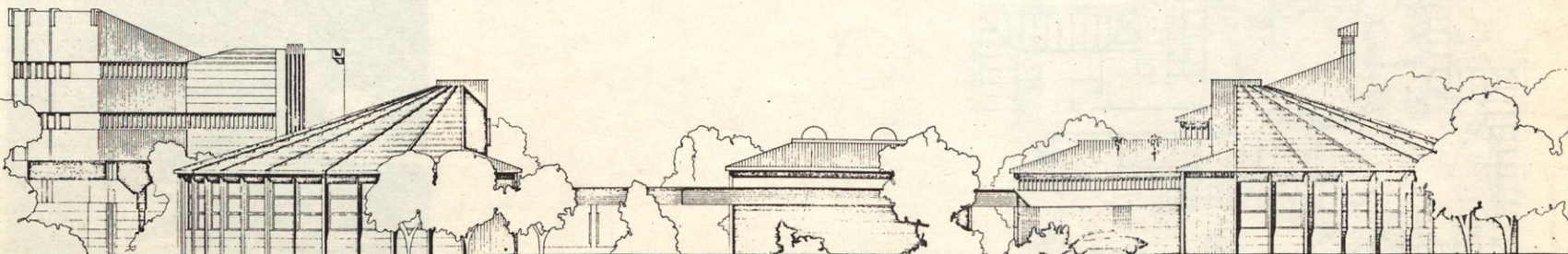
ALZADO SECCION DD



ALZADO SECCION CC



ALZADO SECCION EE



ALZADO SECCION BB